



PLANETARY GEAR BOXES GTN

are used for direct drives of truck mounted concrete mixers with the drum capacity from 3m³ to 18m³. Drum is directly mounted to the driving flange of the gear box which is transmitting torque moment from hydraulic motor and supports its front part.

Planetary Gear Boxes GTN are available:

- with water pump drive
- without water pump drive

	SHORT VERSION	STANDARD VERSION MODEL 2013		STANDARD VERSION
MODEL	GTN-51	GTN-60/M	GTN-70/M	GTN-80
Design	In-line	In-line	In-line	In-line
Gear Ratio	1:100	1:115	1:122	1:140
Max. out/put torque	51.000 Nm	65.000 Nm	75.000Nm	82.000 Nm
Max. dynamic swing angle of the drum flange	± 2°	± 6°	± 6°	± 5°
Oil capacity	6 Liters	9 Liters	10 Liters	8 Liters
Max. input speed	1.800/min	2.010/min	2.200/min	2.600/min
Weight	260 kg	270 kg	285 kg	294 kg
Overall lenght	380 mm	480 mm	480 mm	623 mm
Sound pressure level	75 dB	75 dB	75 dB	82 dB
Oil viscosity	ISO VG320 (CLP-oil DIN 51517/3)			
Oil quality ref.	AH 408.802.990.001EN			
Hydraulic motor's teeth number - use motor 90cm³ or 70cm³ up till 7m³	21	21	21	21
Drum size application	3 - 6 m³	6 - 9 m³	10 - 12 m³	12 - 16 m³

ADVANTAGES of Planetary Gear Boxes GTN Series:

- High torque: From 51.000 to 82.000 Nm for all drum driving applications.
- Smallest overall lenght: Short Version GTN-51: 380mm
Standard Version - Model 2013 GTN-60/M, GTN70/M: 480mm
Standard Version GTN-80: 623mm
- Improvements: Floating female spline sun gear for radial load absorbtion.
- Best materials: In castings and forgings specifications as per din high standards.
Bearings of the highest quality.
- Workmanship: To assure optimum quality and performance.
- Compact design: Making the series GTN one of the lighest gear boxes in the industry to comply with weight limitation laws.
- Easy maintenance: Simple assembling and disassembly procedures.
- Interchangeability: Out/put flange, flange and mounting holes are the same than all others main brands.
- Long life time: Meeting the standards of the industry.
Large out/put bearing for high torque performance and durability.
- Costs effective: Helping to complete in the ready mix industry.

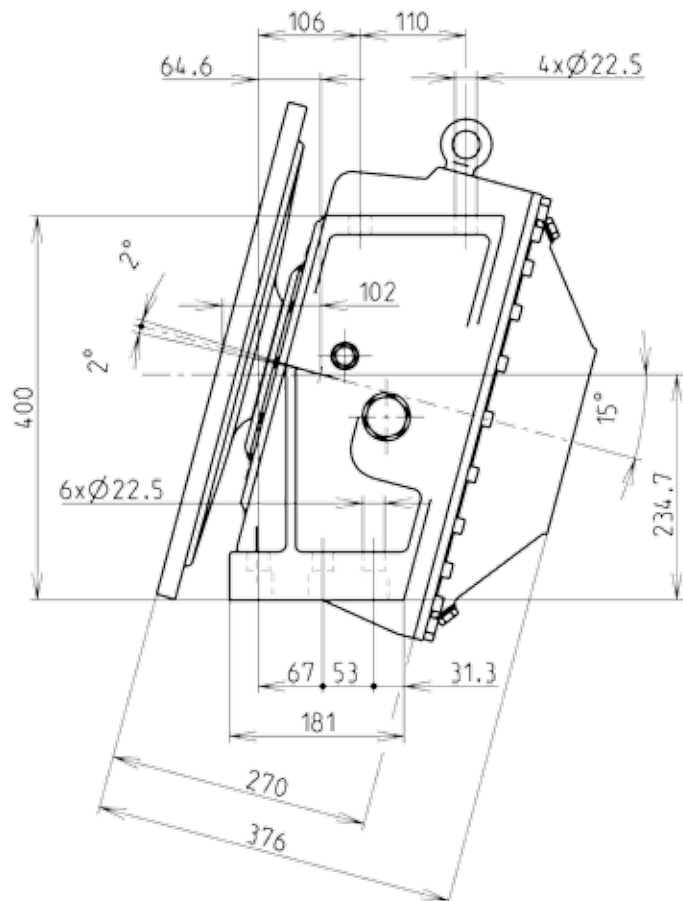
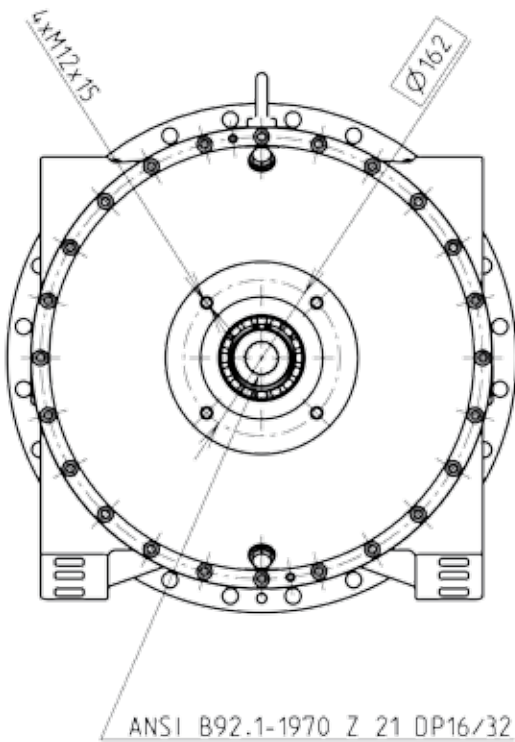
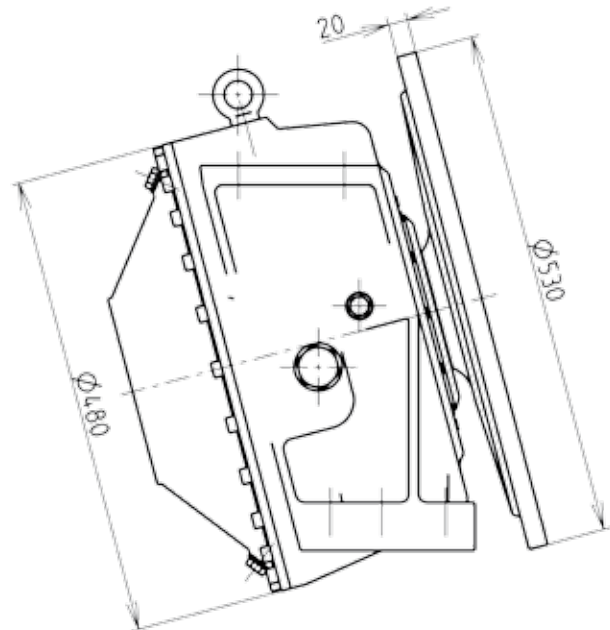
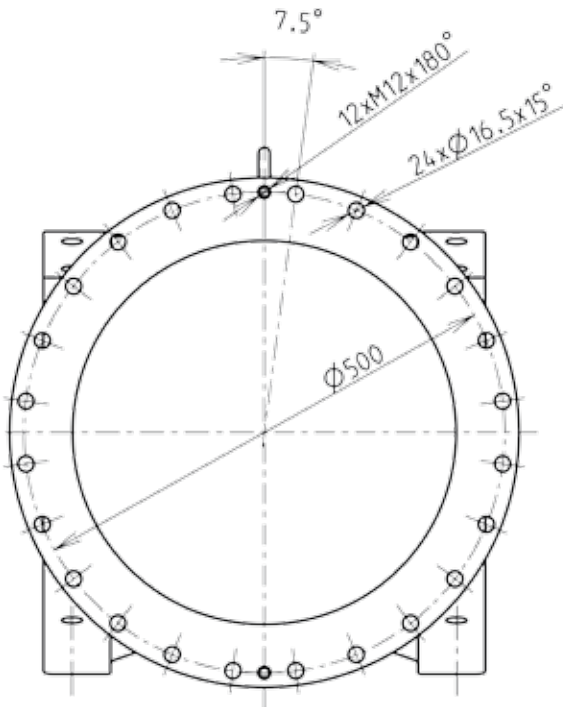
PLANETARY GEAR BOXES GTN

Type GTN-51 GTN-60/M GTN-70/M GTN-80



PLANETARY GEAR BOX GTN-51 SHORT VERSION

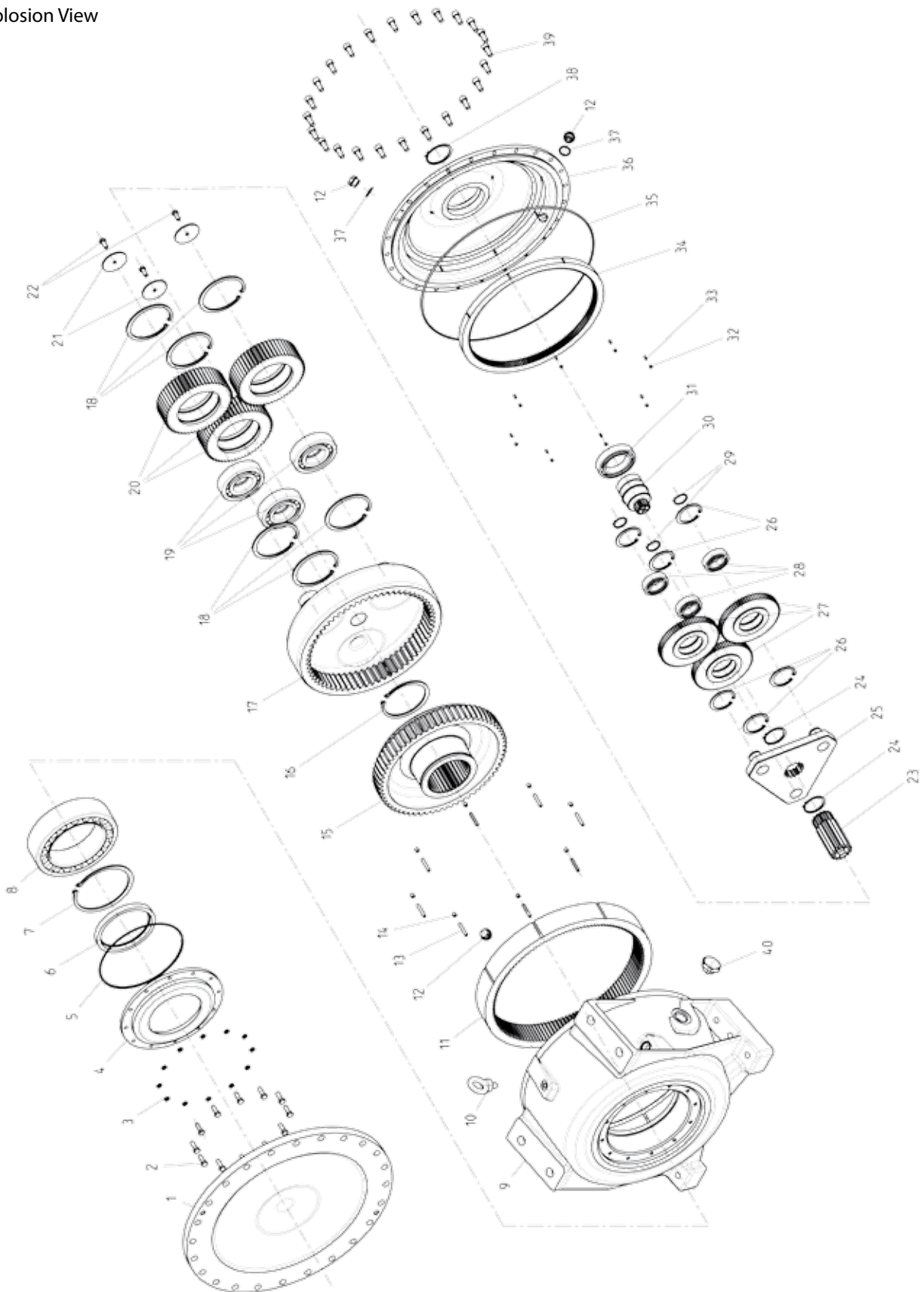
Dimension Drawing





PLANETARY GEAR BOX GTN-51 SHORT VERSION

Explosion View



PLANETARY GEAR BOXES GTN

Type GTN-51 GTN-60/M GTN-70/M GTN-80



3COM[®]
3COM - GTN HYDRAULICS

PLANETARY GEAR BOX GTN-51 SHORT VERSION

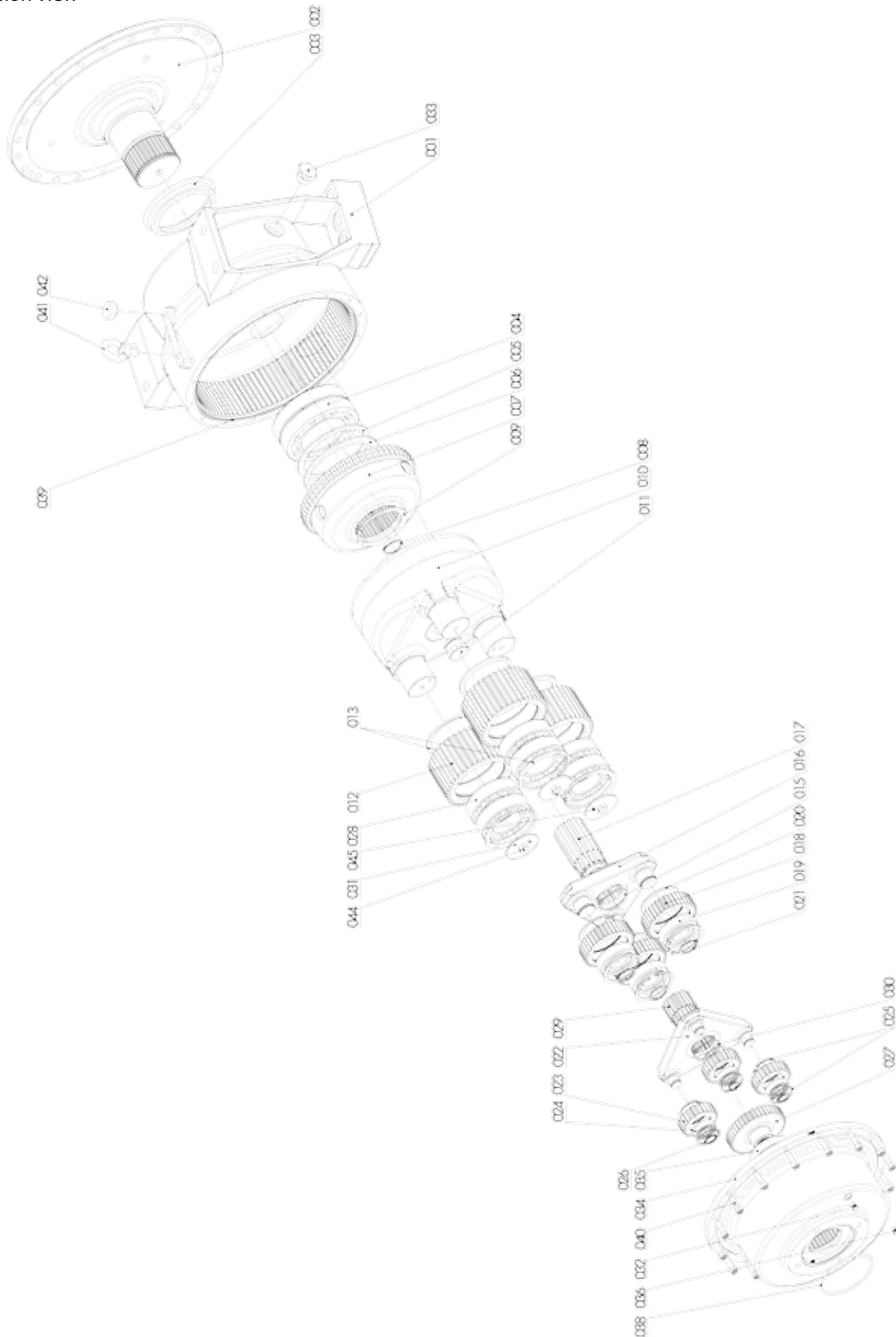
Spare Parts List

Pos.	Qty Pcs	Number 3COM-GTN	Name
1.	1	GTN-001	Output Flange
2.	12	GTN-002	Screw
3.	12	GTN-003	Retaining Ring
4.	1	GTN-004	Output Flange for Bearing
5.	1	GTN-005	Flange Seal
6.	1	GTN-006	Sealing Ring
7.	1	GTN-007	Snap Ring
8.	1	GTN-008	Main Bearing
9.	1	GTN-009	Main Housing
10.	1	GTN-010	Hanging Bolt
11.	1	GTN-011	Input Teething Gear
12.	3	GTN-012	Breather Bolt
13.	8	GTN-013	Pivot
14.	8	GTN-014	Screw
15.	1	GTN-015	Convex Gear
16.	1	GTN-016	Snap Ring
17.	1	GTN-017	Ring with inside Teething
18.	6	GTN-018	Snap Ring
19.	3	GTN-019	Cylindrical Bearing
20.	3	GTN-020	Planetary Gear
21.	3	GTN-021	Retaining Ring
22.	3	GTN-022	Screw
23.	1	GTN-023	Sun Gear
24.	2	GTN-024	Snap Ring
25.	1	GTN-025	Planetary Carrier
26.	6	GTN-026	Retaining Ring
27.	3	GTN-027	Planetary Gear
28.	3	GTN-028	Bearing
29.	3	GTN-029	Retaining Ring
30.	1	GTN-030	Sun Wheel
31.	1	GTN-031	Bearing
32.	8	GTN-032	Screw
33.	8	GTN-033	Pivot
34.	1	GTN-034	Rest Cover
35.	1	GTN-035	Main Cover Seal
36.	1	GTN-036	Rest Cover
37.	3	GTN-037	Sealing Ring
38.	1	GTN-038	Retaining Ring
39.	24	GTN-039	Screw
40.	1	GTN-040	Oil Gauge



PLANETARY GEAR BOX GTN-80 STANDARD VERSION

Explosion View



PLANETARY GEAR BOXES GTN

Type GTN-51 GTN-60/M GTN-70/M GTN-80



PLANETARY GEAR BOX GTN-80 STANDARD VERSION

Spare Parts List

Pos.	Qty Pcs	Number 3COM-GTN	Name
1.	1	GTN-041	Main Housing
2.	1	GTN-042	Output Flange
3.	1	GTN-043	Flange Main Seal
4.	1	GTN-044	Main Output Flange Bearing
5.	1	GTN-045	Supporting Ring
6.	1	GTN-046	Snap Ring
7.	11	GTN-047	Convex Gear
8.	1	GTN-048	Not Used
9.	1	GTN-049	Snap Ring
10.	1	GTN-050	Planetary Carrier
11.	-	GTN-051	Not Used
12.	3	GTN-052	Planetary Gear
13.	6	GTN-053	Cylindrical Roller Bearing
14.	1	GTN-054	Lead Pivot
15.	1	GTN-055	Planetary Carrier
16.	3	GTN-056	Planetary Gear
17.	1	GTN-057	Sun Gear
18.	3	GTN-058	Snap Ring
19.	6	GTN-059	Snap Ring
20.	1	GTN-060	Snap Ring
21.	3	GTN-061	Planetary Gear
22.	3	GTN-062	Radial Ball Bearing
23.	3	GTN-063	Cylindrical Roller Bearing
24.	-	GTN-064	Not used
25.	1	GTN-065	Sun Wheel
26.	1	GTN-066	Planetary Carrier
27.	1	GTN-067	Radial Ball Bearing
28.	6	GTN-068	Snap Ring
29.	1	GTN-069	Sun Wheel
30.	3	GTN-070	Pivot
31.	6	GTN-071	Snap Ring
32.	1	GTN-072	Magnet
33.	1	GTN-073	Oil Gauge
34.	1	GTN-074	Rest Cover
35.	1	GTN-075	Radial Ball Bearing
36.	1	GTN-076	Oil Draining Safety Valve
37.	1	GTN-077	O-Ring (Cooper)
38.	1	GTN-078	O-Ring
39.	1	GTN-079	O-Ring
40.	16	GTN-080	Cheese Head Screw
41.	1	GTN-081	Eye Bolt
42.	1	GTN-082	Breaether Bolt
43.	3	GTN-083	Slide Pad
44.	3	GTN-084	Hexagonal Head Screw
45.	3	GTN-085	Safety Spring Pin
46.	3	GTN-086	Planetary Carrier Pivot